



DESCRIPTION

PROBOND is a water-resistant cement based, polymer modified high performance cementitious adhesive (C2) with no vertical slip (T). It is suitable for interior and exterior application for floors & walls. Probond is ideal for tiling showers, wet areas and swimming pools.

PROBOND bonds most types of Natural stone, ceramic, vitrified tiles & mosaics. It can be used for thin and medium bed floor applications.



FEATURES & BENEFITS

- Meets ANSI A118.4 / EN 12004 C2T
- Suitable for floors and walls applications
- Can be applied up to 18 mm on floor
- Water resistant, ideal for showers and swimming pools
- Exterior or interior use
- Excellent adhesion to porcelain, glazed and unglazed ceramic tiles, natural stone, mosaics etc.
- High initial grab



TECHNICAL DATA

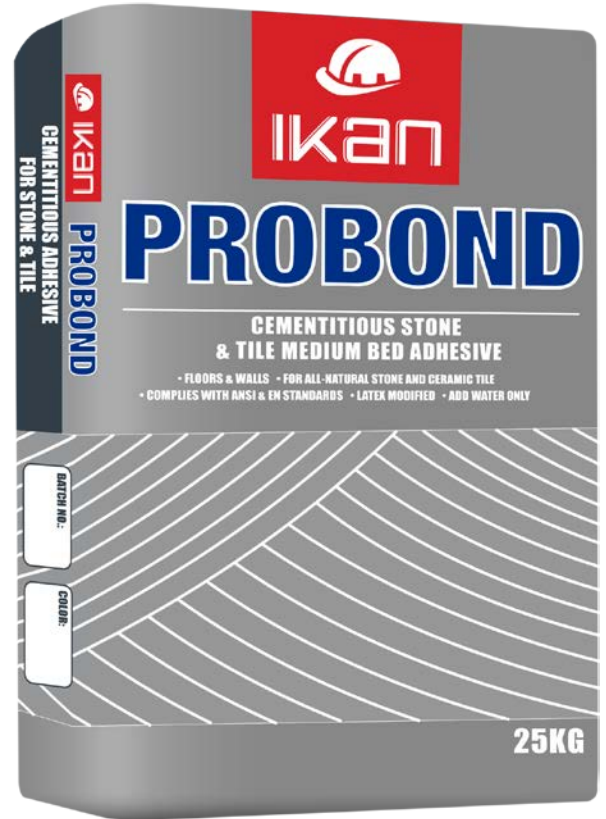
WORKING PROPERTIES (at 23°C)

Open Time	20 minutes
Pot Life	2 hours
Time to light traffic	24 hours
Tensile adhesion strength	≥ 1.00 N/mm ²
Water mixing ratio	5.5- 6 L per 25kg bag
Yield	Approx. 18 L of mixed adhesive

TECHNICAL RECOMMENDATION

For improvement in the overall properties of the bonding strength, water resistance, and flexibility performance. Polycrete can be mixed with the water required for one bag e.g. (4.5 liters of water +1.5 liters of Polycrete).

Back buttering is highly recommended for fully vitrified tile especially the Porcelain tile. Back buttering can be achieved by applying a thin layer of the mixed adhesive on the backside of the tile using the flat side of a trowel to fill the back-pattern voids.



METHOD OF APPLICATION

SURFACE PREPARATION

Surfaces must be sound, clean, cured & dry and free from oil, grease, dust and other loose material or contaminants that could reduce or deteriorate the adhesion. The substrate should not be subject to movement and dimensionally stable. The concrete slabs should be cured and 28 days old before application. Porous surfaces and all types of paper faced plaster boards should be primed with 2 coats of Ikan Polycrete to reduce suction as well as bonding strength improvement.

MIXING

PROBOND should be added slowly to clean & cold water with normal temperature approx. 5.5- 6liters per 25 kg bag, stirring continuously by a forced action mixer to achieve a creamy lump free consistency and allow to stand for 3 mins. Remix again with a slow speed mixer to achieve a smooth, trowelable consistency. The adhesive mixture should be used within its pot life of approx. 2 hours (23°C). No water should be added into the mixing bucket after the original mixing process. Any of the adhesive mixture not used within its pot life should be disposed.

PERFORMANCE PROPERTIES

TEST	TEST METHOD	RESULT	SPECIFICATION
Shear strength	ANSI A118.4	258 psi	≥ 200psi
Slip resistance	ANSI A118.4	0.37 mm	≤ 0.5 mm

Note: the above technical information is based on controlled laboratory conditions. However, there may be some variation in yield and coverage depending on the ambient weather and site conditions.

APPLICATION

Apply mixed adhesive (PROBOND) to the substrate with the flat side of the trowel, pressing firmly to work into surface. Spread only as much adhesive as can be tiled before the product skins over. Open time may vary depending on jobsite conditions. Back butter large tiles to provide full bedding and firm support. Place tiles into the adhesive and beat in using a rubber mallet to adjust level.

Before the adhesive sets, clean excessive adhesive from between joints using scraper and damp cloth. Tools and equipment should be cleaned with water before the adhesive sets on them.

Tiles should be left undisturbed for around 24 hours at 20°C, or longer if the temperature is lower. Apply grout after the adhesive has set & cure.

Note: For more Application details, kindly refer to the method statement attached below.


PACKAGING/COLORS AVAILABLE

25 kg bag / White and Grey


HEALTH & SAFETY

This product contains cement and contact with skin may cause irritation. It should not be inhaled, and a properly designed and maintained face mask should be used whilst handling, pouring and mixing the powder. Avoid contact with the product by working carefully, using a barrier cream and wearing protective gloves. If any contact does occur, wash thoroughly with soap and water. Use eye protection. Avoid contact with eyes, if such contact occurs irrigate with water for 20 minutes and seek medical advice. If mistakenly ingested, drink plenty of clean water and seek medical advice.


TECHNICAL SERVICE

Application of the PROBOND should be done according to the procedure mentioned in this technical data sheet. IKAN INC will not be held responsible for any claim arising out of non-performance of the product due to incorrect application procedure or usage of product for non-recommended purpose. Please contact IKAN INC. technical team for more details on application of PROBOND for any purpose other than mentioned above or on surfaces with other special construction additives.


DISCLAIMER

To the best of our knowledge and belief, this information is true and accurate, but as conditions of use and any labor involved are beyond our control, the end user must satisfy himself by prior testing that the product is suitable for his specific application, and no responsibility can be accepted, or any warranty given by our Representatives, Agents or Distributors. Products are sold subject to our Standard Conditions of Sale and the end user should ensure that he has consulted our latest literature.

EXECUTION STATEMENT FOR APPLICATION OF PROBOND**SURFACE PREPARATION**

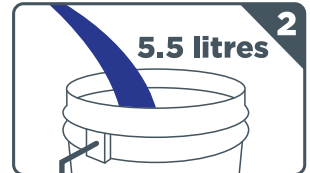
All surfaces should be structurally sound, clean and free of all dirt, oil, grease, dust and other loose material and should not be subject to movement.

APPLICATION

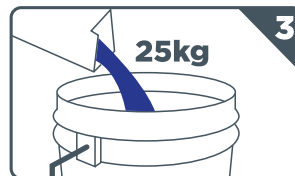
1. Thoroughly mix 5.5 Liters clean, cool water and 25 kg bag of Probond Medium Bed Mortar to a smooth, paste-like consistency.
2. Mix by hand or use a low speed (150 - 200 RPM). Let it stand 5 - 10 minutes, stir again and use.
3. Stir occasionally to keep fluffy, but do not add more water. When properly mixed, troweled ridges will stand with no slump.
4. Using flat side of trowel, apply skim coat of mortar. Apply additional mortar with notched side of trowel held at a 45° angle to the surface, combing in one direction.
5. Press tile firmly into place in a perpendicular motion across ridges, moving back and forth. Perpendicular pressing flattens ridges and closes valleys allowing maximum coverage.
6. With some tile, back buttering is advisable. Adjust tile promptly and beat in with block and rubber mallet.
7. Spread only as much mortar as can be tiled before the product skins over.
8. If material has skinned over (not sticky), recomb with notched trowel, if too dry, remove and replace with fresh material.
9. Wait 24 hours before using the surface.



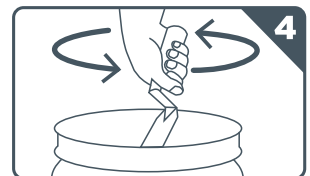
Clean surface of contaminants



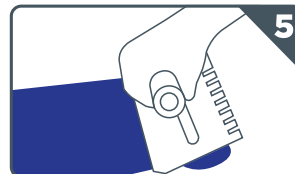
Add cool water



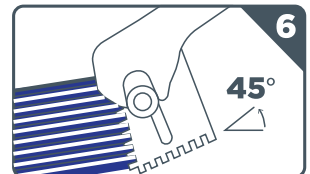
Add adhesive



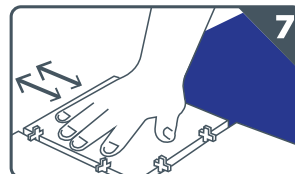
Mix adhesive into water stirring continuously to achieve a lump free consistency



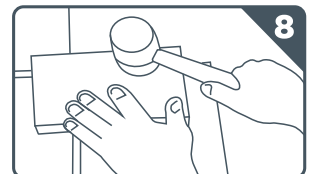
Apply skim coat with flat side of trowel on back side of stone.



Apply adhesive with notch trowel



Press tile firmly into place



Level tile surface with other tile



Lightly clean off excess adhesive with damp sponge



Wait 24 hours before using the surface