

### DESCRIPTION

TILOBOND is a polymer modified cementitious (C1) adhesive with a slip or sag resistance (T) to be mixed with water to install tiles and non-moisture sensitive porous natural stone using the thin-set method of installation. TILOBOND has a strong bonding strength with most types of tiles in a thin set application according to the EN and ANSI standards. Also, this product meets ASTM C 270 and ASTM C 1714 requirements.

### USES:

Formulated & designed for interior or exterior installation of the following for walls and floors

- Ceramic & non-vitrified tiles
- Porcelain & vitrified tiles
- Mosaic & clay tiles
- Glazed & unglazed tiles
- Porous natural stone

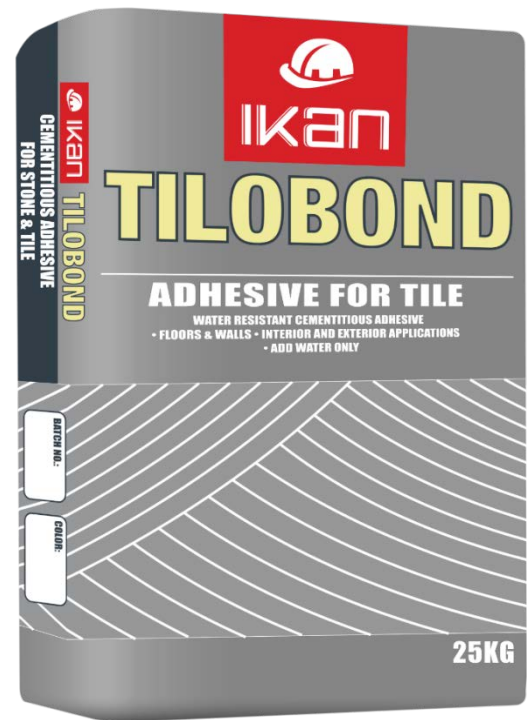
### CHARACTERISTICS

- Dual purpose, for walls and floors
- Strong bond and durable
- Suitable substrates:
  - Concrete & cementitious based screeds, sufficiently dry and cured
  - Cementitious brick walls
  - Cementitious plaster and renders, sufficiently dry and cured.
- TILOBOND not recommended directly on the following substrates:
  - Gypsum substrate and wood board
  - Rubber, PVC or metallic surface
  - Surfaces subject to strong movement or heat

### TECHNICAL RECOMMENDATION

For improvement in the overall properties of the bonding strength, water resistance, and flexibility performance. Polycrete can be mixed with the water required for one bag e.g. (3.5 liters of water +1.5 liters of Polycrete).

Back buttering is highly recommended for fully vitrified tile especially the Porcelain tile. Back buttering can be achieved by applying a thin layer of the mixed adhesive on the backside of the tile using the flat side of a trowel to fill the back-pattern voids.



### TYPICAL PROPERTIES

Appearance	Powder
Color	Grey & White
Composition	Cement, sand and polymer additives
Water mixing ratio	5 Liters per 25kg bag
IKAN Latex solution	1.5 Liters per 25kg bag
Yield	Approx. 16 L of mixed adhesive
pH of the mixture	12 ± 0.5
Pot life	1-2 hours*
Open time	20 minutes*
Time to floor light foot traffic	After 24 hours
Floor grouting	After the adhesive get cured
Wall grouting	
Slip resistance	Excellent
Plastic density	Approx. 1.7 kg/liter

\*At standard conditions (Temp: 21-25°C & relative humidity: 50±5 %)



## PERFORMANCE PROPERTIES

TILOBOND was tested according to EN 12004 & ANSI A118.1 in standard conditions:

TEST	TEST METHOD	SPECIFICATION	RESULTS
Determination of open time by tensile adhesion strength.	EN 12004 (8.1) & ANSI A118.1	75 psi (0.5 N/mm <sup>2</sup> )	
Determination of slip or sag on vertical surfaces	EN 12004 (8.2) & ANSI A118.1	≤ 0.5 mm	Complies with standards values
Determination of Tensile adhesion strength for cementitious adhesives	EN 12004 (8.3)	≥ 75psi (0.5N/mm <sup>2</sup> )	
Shear strength to ceramic tile (glazed wall tile)	ANSI A118.1	≥ 150 psi (1.03 N/mm <sup>2</sup> )	

*Note: the above performance properties are based on controlled laboratory conditions. However, there may be some variation depending on the ambient weather and site conditions*



## METHOD OF APPLICATION

### SURFACE PREPARATION

Surfaces must be sound, clean, cured & dry and free from oil, grease, dust and other loose material or contaminates that could reduce or deteriorate the adhesion. The substrate should not be subject to movement and dimensionally stable. The concrete slabs should be cured and 28 days old before application. Porous surfaces and all types of paper faced plaster boards should be primed with 2 coats of Ikan Polycrete to reduce suction as well as bonding strength improvement.

### MIXING

TILOBOND should be added slowly to clean & cold water with normal temperature approx. 5 liters per 25 kg bag, stirring continuously by a forced action mixer to achieve a creamy lump free consistency and allow to stand for 3 mins. Remix again with a slow speed mixer to achieve a smooth, trowelable consistency. The adhesive mixture should be used within its pot life of approx. 2 hours (23°C). No water should be added into the mixing bucket after the original mixing process. Any of the adhesive mixture not used within its pot life should be disposed.

## APPLICATION

Apply mixed adhesive (TILOBOND) to the substrate with the flat side of the trowel, pressing firmly to work into surface. Spread only as much adhesive as can be tiled before the product skins over. Open time may vary depending on jobsite conditions. Back butter large tiles to provide full bedding and firm support. Place tiles into the adhesive and beat in using a rubber mallet to adjust level.

Before the adhesive sets, clean excessive adhesive from between joints using scraper and damp cloth. Tools and equipment should be cleaned with water before the adhesive sets on them.

Tiles should be left undisturbed for around 24 hours at 20°C, or longer if the temperature is lower. Apply grout after the adhesive has set & cure.

*Note: For more Application details, kindly refer to the method statement attached below.*

### COVERAGE

Apply TILOBOND evenly on the substrate by using suitable notched trowel depending on the tile size. Consumption will be determined according to the used notched trowel.

Trowel n. 4	Approx. 2 – 2.5 kg/m <sup>2</sup>
Trowel n. 6	Approx. 4 – 4.5 kg/m <sup>2</sup>
Trowel n. 8	Approx. 5 – 5.5 kg/m <sup>2</sup>
Trowel n. 10	Approx. 6.5 – 7 kg/m <sup>2</sup>



### PACKAGING/ COLORS AVAILABLE

25 kg bag Grey & White



### STORAGE & SHELF LIFE

12 months in a dry place in original sealed packaging.



### SAFETY PRECAUTIONS

This product contains cement and contact with skin may cause irritation. Avoid contact with eyes or prolonged contact with skin. In case of contact, flush thoroughly with water. Do not take internally. Avoid breathing dust. Wear a respirator in dusty areas.

Keep out of reach of children.



### TECHNICAL SERVICE

Application of the TILOBOND should be done according to the procedure mentioned in this technical data sheet. IKAN INC will not be held responsible for any claim arising out of non-performance of the product due to incorrect application procedure or usage of product for non-recommended purpose. Please contact IKAN INC. technical team for more details on application of TILOBOND for any purpose other than mentioned.



### DISCLAIMER

To the best of our knowledge and belief, this information is true and accurate, but as conditions of use and any labor involved are beyond our control, the end user must satisfy himself by prior testing that the product is suitable for his specific application, and no responsibility can be accepted, or any warranty given by our Representatives, Agents or Distributor

# METHOD STATEMENT

# TILOBOND

## CEMENTITIOUS TILE ADHESIVE

IKAN

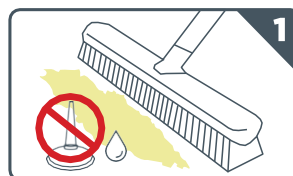
### EXECUTION STATEMENT FOR APPLICATION OF TILOBOND

#### SURFACE PREPARATION

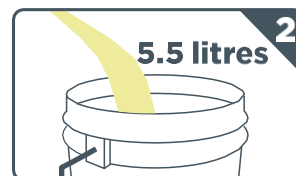
All surfaces should be structurally sound, clean, and free of all dirt, oil, grease, dust, and other loose material and should not be subject to movement.

#### APPLICATION

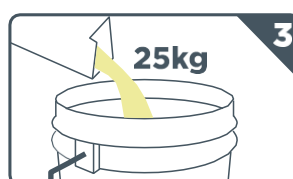
1. Thoroughly mix 5 to 5.5 Liters clean, cold water and 25 kg bag of Tilobond to a smooth, paste-like consistency.
2. Mix by mechanical forced action mixer with a low speed (150 - 200 RPM). Let it stand for approx. 3 minutes and remix again to use.
3. Stir occasionally to keep fluffy, but do not add more water. When properly mixed, troweled ridges will stand with no slump.
4. Pre-wet the substrate and apply by wet on wet method.
5. Using flat side of trowel, apply skim coat of the mixed adhesive. Apply additional layer of mixed adhesive with notched side of trowel held at a 45° angle to the surface, combing in one direction.
6. Press tile/stone firmly into place in a perpendicular motion across ridges, moving back and forth. Perpendicular pressing flattens ridges and closes valleys allowing maximum coverage.
7. With some tile like porcelain back buttering is highly recommended. Adjust tile promptly and beat in with rubber mallet.
8. Spread only as much mixed adhesive as can be tiled before the product skins over.
9. If material has skinned over (not sticky), recomb with notched trowel, if too dry, remove and replace with fresh material.
10. Wait 24 hours before using the surface.



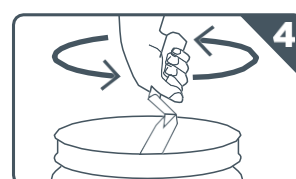
Clean surface of contaminants



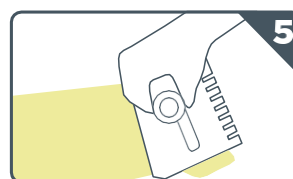
Add cool water



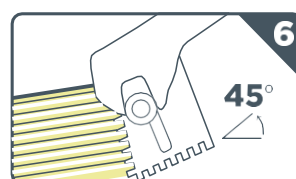
Add adhesive



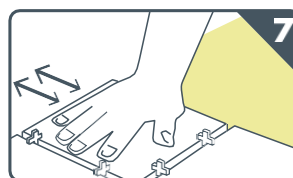
Mix adhesive into water stirring continuously to achieve a lump free consistency



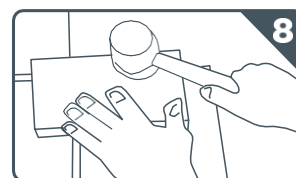
Apply skim coat with flat side of trowel on back side of stone.



Apply adhesive with notch trowel



Press tile firmly into place



Level tile surface with other tile



Lightly clean off excess adhesive with damp sponge



Wait 24 hours before using the surface