

DESCRIPTION

FLEXBOND is a polymer improved cementitious adhesive (C2) with extended open time (E), slip resistant (T) and deformable (S1), classified as C2 TE S1. Specially formulated to have enhanced properties of adhesion and flexibility, the advanced slump resistance properties make FLEXBOND ideal for fixing large format wall tiles. FLEXBOND is a multipurpose adhesive for all ceramic coverings, glass mosaic, porcelain and non-moisture sensitive natural stones.

FEATURES & BENEFITS

- Meets the classification requirements for C2 TE S1 adhesives according to EN 12004 and ANSI A118.4.
- Non-sag, no need for battens and spacers, therefore easy and quick application
- Flexible, compensates changes in temperature and elongations of the substrates
- Freeze thaw resistance
- Ideal for swimming pools and wet areas
- For floors and walls, internal and external applications
- Ideal for all tile types and nature stones.
- Ready to use, just mix with water

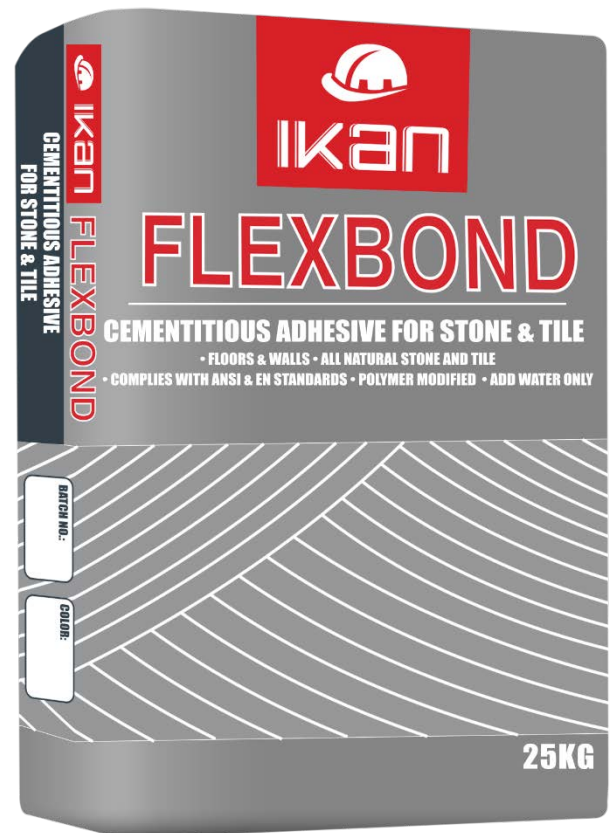
AREAS OF APPLICATION

- For laying non-vitrified tiles, vitrified tiles, fully vitrified tiles, porcelain mosaic, glass mosaic, glass tiles, brick tiles, terracotta, artificial and non-staining natural stones.
- In swimming pools, pool surrounds, wet rooms and cold storage depots.
- On cementitious screeds, ground anhydrite and/or gypsum based floated screeds, precast concrete elements, aerated concrete, heated screeds, plasterboards, gypsum fiber boards, dry screeds, insulation boards, plaster slabs etc.

TECHNICAL RECOMMENDATION

For improvement in the overall properties of the bonding strength, water resistance, and flexibility performance. Polycrte can be mixed with the water required for one bag e.g. (5 liters of water +1.5 liters of Polycrte).

Back buttering is highly recommended for fully vitrified tile especially the Porcelain tile. Back buttering can be achieved by applying a thin layer of the mixed adhesive on the backside of the tile using the flat side of a trowel to fill the back-pattern voids.



TYPICAL PROPERTIES

WORKING PROPERTIES (at 23°C)

Appearance	Powder
Color	Grey or white
Composition	Cement, sand and additives
Storage and shelf life	12 months in a dry place in
Water mixing ratio	6-6.5 Liters of water per 25 Kg
pH of paste	≈ 12 ± 0.5
Pot life	2-3 hours at standard condition (Temp: 21-25°C & Relative humidity: 50±5 %)
Open time	30 minutes at standard condition
Time to floor light foot traffic	24 hours
Floor grouting	24 hours
Wall grouting	
Application temperature	From 5°C to
35°C Slip resistance	Excellent

PERFORMANCE PROPERTIES

FLEXBOND was tested according to EN 12004 & ANSI A118.4 standards in standard conditions.

TEST	TEST METHOD	SPECIFICATION	RESULTS
Determination of open time by tensile adhesion strength.	EN 12004 (8.1) & ANSI A118.4	> 75psi (0.5MPa) at 30 minutes.	Complies with standards values
Determination of slip or sag on vertical surfaces	EN 12004 (8.2) & ANSI A118.4	< 0.5 mm	
Determination of Tensile adhesion strength for cementitious adhesives	EN 12004 (8.3)	> 150 psi (1 N/mm ²)	
Shear strength to ceramic tile (glazed wall tile)	ANSI A118.4 EN 12004 (8.6)	□ 300psi (2.07MPa) □ 2.5 mm and < 5 mm	
Deformable adhesive (S1): transverse deformation			

Note: The above performance properties are based on controlled laboratory conditions. However, there may be some variation depending on the ambient weather and site conditions.

METHOD OF APPLICATION

SURFACE PREPARATION

Surfaces must be sound, clean, cured & dry and free from oil, grease, dust and other loose material or contaminates that could reduce or deteriorate the adhesion. The substrate should not be subject to movement and dimensionally stable. The concrete slabs should be cured and 28 days old before application. Porous surfaces and all types of paper faced plaster boards should be primed with 2 coats of Ikan Polycrrete to reduce suction as well as bonding strength improvement.

MIXING

FLEXBOND should be added slowly to clean & cold water with normal temperature approx 6.6.5 liters per 25 kg bag, stirring continuously by a forced action mixer to achieve a creamy lump free consistency and allow to stand for 3 mins. Remix again with a slow speed mixer to achieve a smooth, trowelable consistency. The adhesive mixture should be used within its pot life of approx. 2 hours (23°C). No water should be added into the mixing bucket after the original mixing process. Any of the adhesive mixture not used within its pot life should be disposed.

APPLICATION

Apply mixed adhesive (FLEXBOND) to the substrate with the flat side of the trowel, pressing firmly to work into surface. Spread only as much adhesive as can be tiled before the product skins over. Open time may vary depending on jobsite conditions. Back butter large tiles to provide full bedding and firm support. Place tiles into the adhesive and beat in using a rubber mallet to adjust level.

Before the adhesive sets, clean excessive adhesive from between joints using scraper and damp cloth. Tools and equipment should be cleaned with water before the adhesive sets on them.

Tiles should be left undisturbed for around 24 hours at 20°C, or longer if the temperature is lower. Apply grout after the adhesive has set & cure.

Note: For more Application details, kindly refer to the method statement attached below.

PACKAGING /COLORS AVAILABLE

25 kg bag / White and Grey

HEALTH & SAFETY PRECAUTIONS

This product contains cement and contact with skin may cause irritation. It should not be inhaled, and a properly designed and maintained face mask should be used whilst handling, pouring and mixing the powder. Avoid contact with the product by working carefully, using a barrier cream and wearing protective gloves. If any contact does occur, wash thoroughly with soap and water. Use eye protection. Avoid contact with eyes, if such contact occurs irrigate with water for 20 minutes and seek medical advice. If mistakenly ingested, drink plenty of clean water and seek medical advice.

TECHNICAL SERVICES

Application of the FLEXBOND should be done according to the procedure mentioned in this technical data sheet. IKAN INC will not be held responsible for any claim arising out of non-performance of the product due to incorrect application procedure or usage of product for non-recommended purpose. Please contact IKAN INC. technical team for more details on application of FLEXBOND for any purpose other than mentioned above or on surfaces with other special construction additives.

DISCLAIMER

To the best of our knowledge and belief, this information is true and accurate, but as conditions of use and any labor involved are beyond our control, the end user must satisfy himself by prior testing that the product is suitable for his specific application, and no responsibility can be accepted, or any warranty given by our Representatives, Agents or Distributors. Products are sold subject to our Standard Conditions of Sale and the end user should ensure that he has consulted our latest literature

METHOD STATEMENT FLEXBOND

HIGH PERFORMANCE FLEXIBLE CEMENTITIOUS ADHESIVE

IKAN

EXECUTION STATEMENT FOR APPLICATION OF PROBOND

SURFACE PREPARATION

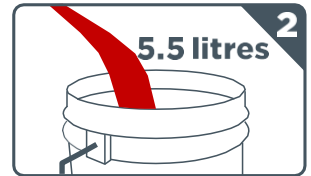
All surfaces should be structurally sound, clean and free of all dirt, oil, grease, dust and other loose material and should not be subject to movement.

APPLICATION

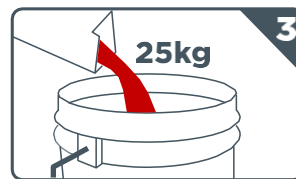
1. Thoroughly mix 6 - 6.5 Liters clean, cool water and 25 kg bag of Flexbond High Performance Flexible Cementitious Adhesive to a smooth, paste-like consistency.
2. Mix by hand or use a low speed (150 - 200 RPM). Let it stand 5 - 10 minutes, stir again and use.
3. Stir occasionally to keep fluffy, but do not add more water. When properly mixed, troweled ridges will stand with no slump.
4. Using flat side of trowel, apply skim coat of mortar. Apply additional mortar with notched side of trowel held at a 45° angle to the surface, combing in one direction.
5. Press tile firmly into place in a perpendicular motion across ridges, moving back and forth. Perpendicular pressing flattens ridges and closes valleys allowing maximum coverage.
6. With some tile, back buttering is advisable. Adjust tile promptly and beat in with block and rubber mallet.
7. Spread only as much mortar as can be tiled before the product skins over.
8. If material has skinned over (not sticky), recomb with notched trowel, if too dry, remove and replace with fresh material.
9. Wait 24 hours before using the surface.



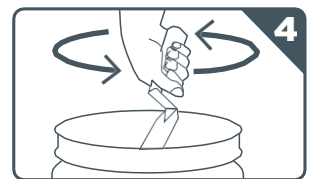
Clean surface of contaminants



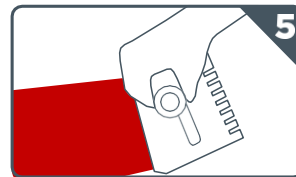
Add cool water



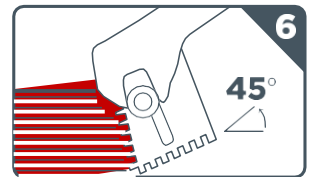
Add adhesive



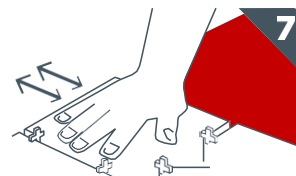
Mix adhesive into water stirring continuously to achieve a lump free consistency



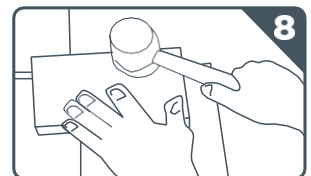
Apply skim coat with flat side of trowel on back side of stone.



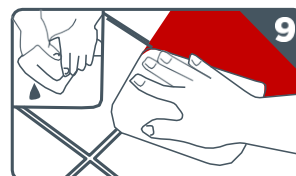
Apply adhesive with notch trowel



Press tile firmly into place



Level tile surface with other tile



Lightly clean off excess adhesive with damp sponge



Wait 24 hours before using the surface